

# MELPARTICULARS

Volume 8, Number 5

E-Systems Melpar Division

August 1987

## SECOND ANNUAL FIELD SYSTEM CONFERENCE HELD

The second annual Division Field System Managers Conference was held at Melpar's Falls Church facility in late June.

Attending the meeting were the Division field system managers from stateside and overseas, as well as representatives from DET 8/Air Force Logistics Command (AFLC), Electronic Security Command (ESC), and various plant personnel.

The conference, which was jointly sponsored by DET 8/AFLC and the Melpar Operational Support Group, opened with welcome remarks by Vice President and General Manager Talbot Huff. Operational Systems Program Manager Al Montecino hosted the conference, which included briefings on personnel policy, cost control, technical documentation, training, medical care in the field, customer requirements, and engineering developments. Featured in the list of speakers were John Nadolny, DET 8/AFLC Customer Manager, and Master Sergeant John Edwards, USAF, of Headquarters ESC/LGM.

A series of roundtable discussions gave the field system managers the opportunity to increase their knowledge about improved communications techniques, automation of databases, and personnel evaluation procedures. In turn, presentations by the field system managers gave Melpar management the opportunity to

**CONFERENCE Cont. on page 3**

## KENNEDY AND SEVERINO RECEIVE EXCELLENCE AWARDS

The quarterly management meeting and dinner was held in the Falls Church facility on 23 June. The meeting included Service Awards presentations as well as a review of the Division's business performance. One of the highlights of the meeting was the distribution of the Awards for Technical and Administrative Excellence.

The Award for Technical Excellence was presented to Joe Kennedy, Engineering Supervisor for Special Programs, for his innovative and valuable technical contributions. Kennedy's architectural concept of a "universal" interface was significant in the positive evaluation of the winning SAE proposal. He also conceived a novel technical approach for designing tunable narrowband HF notch filters, resulting in a research study contract. In addition, he developed a new method for detecting complex modulation broadband signals which has now



Joseph Kennedy, winner of the 1987 Award for Technical Excellence, accepts his award from Vice President and General Manager Talbot Huff as Vice President of Advanced Systems Mike Cooke looks on.

become part of a current IR&D effort.

Kennedy's reaction when he was presented with the award was one of surprise. "I didn't anticipate for a min-

**EXCELLENCE Cont. on page 2**

## MELPAR ESTABLISHES NEW SKILLS INVENTORY

The Business Development Information Center (BDIC) has successfully executed a Company-wide effort to gain a central source of information on the experience and various skills possessed by Melpar technical personnel.

The co-authors of this project, Jane Kinzler and Cindy Strange, developed and distributed over 1,100 skills inven-

tories in order to consolidate this information and make it more readily available for Melpar's business pursuits. One month after the distribution of the inventories, BDIC had a return of 93% (all of which have been entered into the database). Since then, a number of information requests for upcoming proposal efforts have already been ful-

**BDIC Cont. on page 3**



Attending the Field Systems Conference (from left to right) were Jerry Beshens, Dave Hardee, Okey Warden, Tony Hansberger, Al Montecino, Bob Savage, Gerry Bacon, Ron Ostrom, Rick Ronci, and Roy Krebs.

## Melpar as I see it...



We have reached the mid-point of 1987, and it is appropriate to review where we are now and what the future holds for Melpar.

This year has seen a slow-down in the pace of incoming new business. A significant number of business pursuits have been delayed or sluggish in arriving. However, these program award stretch-outs do not tell the whole story of where we stand.

The BGPHERS Surface Terminal was delivered and is well on its way to being a strong success. We have a very large receiver production backlog which extends into the 1990's. Melpar has booked several USAF next generation intelligence systems programs which will be long-running jobs. Additionally, the Signal Acquisition and Exploitation program represents a foothold in the U.S. Navy's fixed site market.

The short-term impact of award delays means that we will need to continue to be efficient in our use of Bid & Proposal and Independent Research & Development funds. We will also have to trim and control our indirect costs. In brief, we must be lean and efficient.

As for the long term, the BGPHERS program is expected to require that Melpar design a down-sized surface terminal and produce several systems. It is also highly probable that our airborne components will provide a basis for our participation in the design and development of new airborne systems.

Our security sensors are nearing volume production, and we have a promising entry into a specialized niche of the Automated Test and Equipment market. In addition, we have recently won a competitive procurement of the AN/APR-39 (V) 1 radar homing and warning system, and our new Nanomin receiver is in production.

It will take a team effort to ensure that the potential we have evolves into success. It can be done. We have a firm foundation. The balance of this year will require our best efforts to get past the short-term difficulties. Working together, we can achieve the bright future that is ours.

*Talbot S. Huff*

### EXCELLENCE Cont. from page 1

ute that I would be the one to receive the award," said Kennedy. "The great part about getting an award like this is the recognition that it gives to all of us in Special Programs," he continued. "It's nice to know that our work is held in such high esteem."

Next, Evy Lowenstern Severino, Senior Personnel Representative in Employee Relations, was presented with the Award for Administrative Excellence for her outstanding contributions in the areas of benefits administration and employee relations counseling. Her accomplishments include bringing a computer system for providing pension estimates on line and overseeing a relatively error-free FlexComp benefits enrollment this past fall. In addition, her general expertise regarding employee benefits and her strong interpersonal skills have made her extremely valuable in providing assistance to employees on day-to-day issues.

Like Kennedy, Severino's initial reaction was one of surprise. Upon

receiving the award, she commented that she was "very honored." "I always thought that the Award for Administrative Excellence was reserved for those employees whose jobs are directly related to Melpar business pursuits," she later said. "I'm very pleased to find out, for others as well as for myself, that it simply represents the company's appreciation for a job well done."

**M**



Evy Severino proudly accepts her Administrative Excellence Award check from Vice President and General Manager Talbot Huff.

## Security Spotlight

The monitoring of telephone conversations has long been a security threat to our military and industry. Eavesdropping is much easier than ever since the bulk of our conversations are transmitted via microwave and satellite transmissions. Security experts are concerned about the sensitive and valuable technical information discussed over normal telecommunication instruments which may provide a priceless "giveaway" of intelligence to the Soviet Union and other nations — friend or foe.

The Soviets currently target businesses, banking institutions and brokerage houses, in addition to our Government lines of communication. A few years ago the President signed the National Security Decision Directive (NSDD) 145, which placed the responsibility for security of telecommunications with the National Security Agency (NSA). Through much work, NSA has developed a new secure telephone system for widespread use within Government and defense contractors — the STU-III. The STU-III is a secure system with excellent voice quality that meets a broad variety of needs. Melpar has purchased two of these units which will be installed by the end of October 1987. More units are programmed for 1988. We have come a long way. Please keep up the good work. **M**

## Credit Union News

- Melpar Employees Federal Credit Union (MEFCU) is now your family savings place. The Board of Directors has adopted a change to the MEFCU Charter that allows members of your immediate family to open an account in their own names. Stop by the office and ask for more details.

- When the Credit Union has an important message for its members, the best way to communicate it is through the U.S. mail. In addition, we must mail at least one statement to MEFCU members each year for the supervisory committee verification. These mailings can only go to the addresses we have on file. If you have moved, please stop by the office to let us know your new address, and help the Credit Union save funds spent in return postage and time spent hunting for proper addresses.

**M**

### MELPARTICULARS

Published by

**E-Systems Melpar Division**

7700 Arlington Boulevard, Falls Church, VA 22046

Editor: Dee Boysen

Photographers: Bob Lewis, Jim Mattern,  
Lucy Murphy, Pete Piraneo

Production: Estelle Fellman

Typesetting: Betty Reid, Elaine Shaffer

Printing: Doug Dreibelbis

Contributors: Sandra Blumberg, Don Cork,  
Mike Dutchak, John Flahive, Jane Kinzler,  
Lee Lamoreaux, Jim LaRosa, Lee Martin,  
Bill Mitchell, Al Montecino, Pam Montefusco,  
Rene Plourde, Kathy Samples, Laura Turner



From left to right: Thomas E. Barclay; Charles H. Thurber, Jr.; Talbot S. Huff; Fredrick A. Behrens; and Eugene E. Jacob.

## EMPLOYEES HONORED FOR PATENTED INVENTIONS

Vice President and General Manager Talbot Huff presented recognition plaques to Charles H. Thurber and Fredrick A. Behrens for the invention entitled "Ordnance Delivery System and Method Including Remotely Piloted or Programmable Aircraft with Yaw-to-Turn Guidance Networks"; to Eugene E. Jacob for the invention entitled "Tack-on Acknowledgement in Computer Networks"; to Thomas E. Barclay for the invention entitled "Variable Threshold Receiver"; and to Barclay and Jacob for the invention entitled "Multinodal Data Communication Network." **M**

### CONFERENCE Cont. from page 1

learn about employee morale and the current state of operations at the various sites.

The conference ended with a social get-together where the participants commented that the meeting was an unqualified success. The field system managers expressed their appreciation to all who contributed time and effort to the event, and added that they looked forward to next year's meeting. **M**

### BDIC Cont. from page 1

filled. This database will prove invaluable to the marketing directorates in identifying particular technical capability and experience for new business pursuits, program management, and proposal preparation.

The uses of the skills inventory are endless because the information covers the many different backgrounds of each technical employee — from work experience to membership in professional associations. The system will be updated with new employees, and each present participant will have the opportunity to update his/her inventory on an annual basis. Access to the information in the database is kept confidential and release is only on a 'need-to-know' basis.

The Business Development Information Center would like to thank all employees who participated in this effort. Your input has provided Melpar with a much needed database on the division's most important resource — its personnel. Useful in a variety of applications, a major thrust will be to convince customers that Melpar has the competitive edge needed to successfully execute their programs. **M**

## E-TEAMERS AWARDED FOR PUBLISHING PAPERS

This July, Vice President and General Manager Talbot Huff presented John Flahive and Rene Plourde of Systems Development with \$200 checks for recently published articles.

Flahive's article, "The Impact of Ada on Real Time C<sup>3</sup>I Systems," was published in the second edition of *Defense Electronics* magazine's *C<sup>3</sup>I Handbook* earlier this year. The article, which was solicited by *Defense Electronics*, is an analysis of the benefits and possible problems associated with using Ada as the single programming language for all Department of Defense (DoD) mission-critical systems. Flahive believes that Ada will "have a positive impact on all C<sup>3</sup>I systems and will satisfy approximately 85 percent of the functional requirements of a given system."

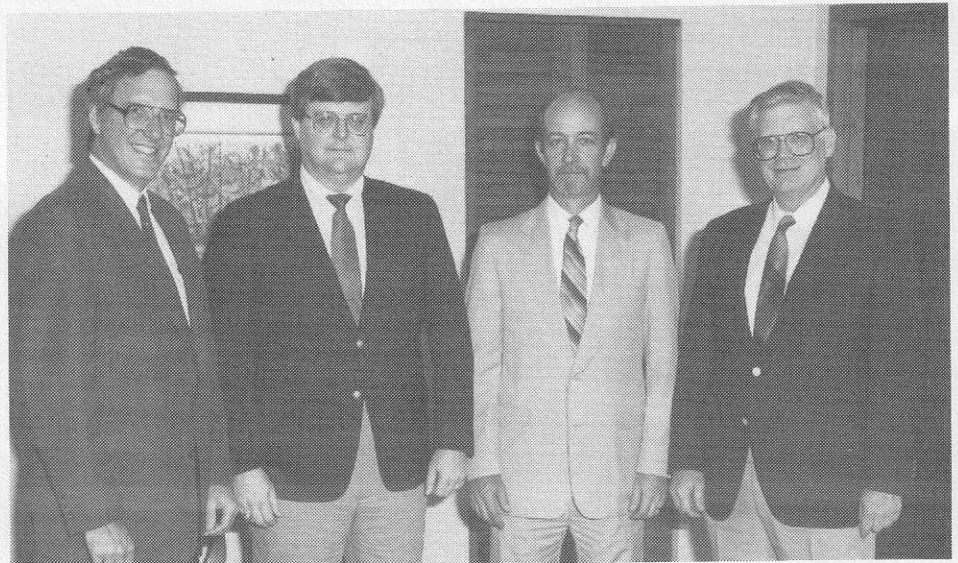
The Association of Old Crows

accepted Rene Plourde's paper, "Automated Diagnostic Maintenance Assistant (ADMA)," for publication in their Joint Western-Mountain Region Technical Symposium Proceedings, April 1987. Plourde's article defines ADMA and provides a detailed description of the system's components. According to the paper, ADMA is an "Expert (knowledge-based) system designed to assist in troubleshooting and repairing Tactical Ground Intercept Facility (TGIF) hardware malfunctions."

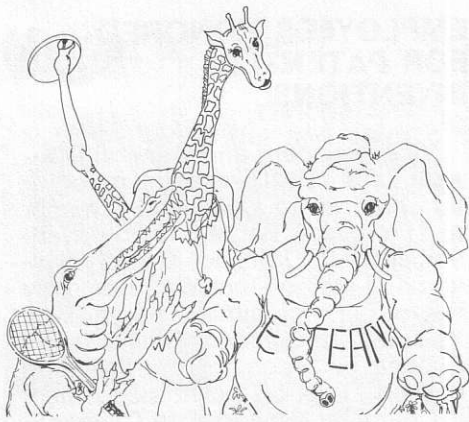
There are several benefits associated with publishing, the most obvious of which is professional recognition for the author. If the paper is related to Melpar business, then the company gains exposure as well.

"Not only do articles help establish

**PAPERS Cont. on page 7**



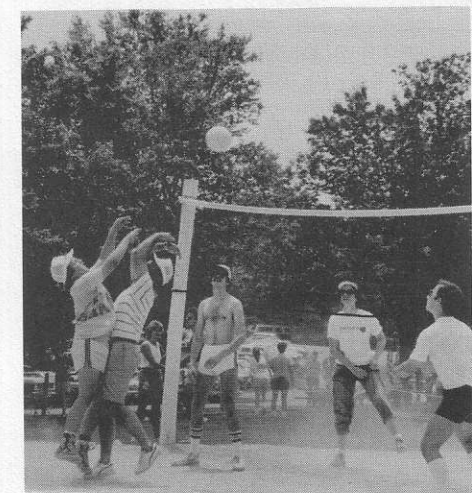
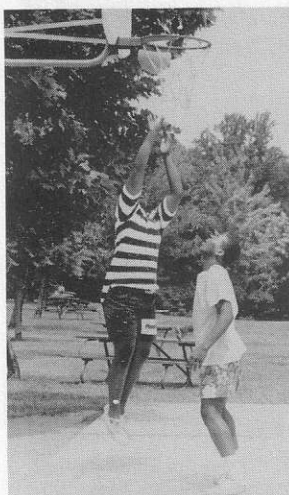
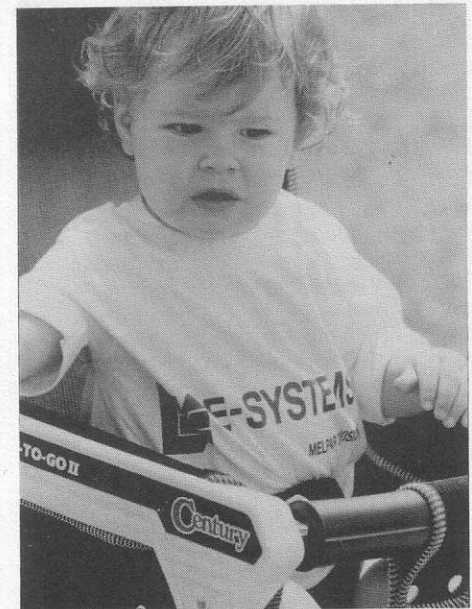
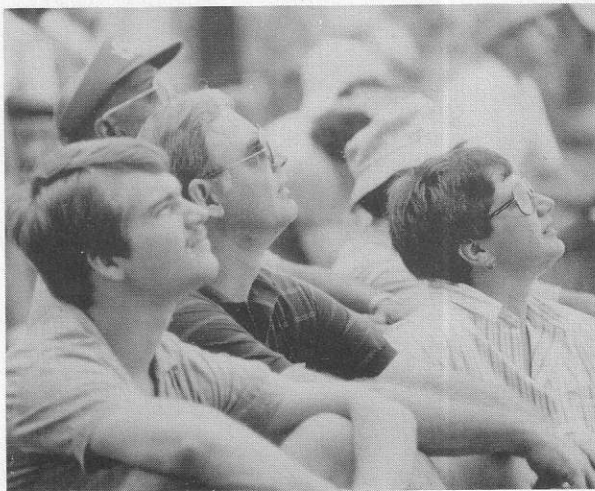
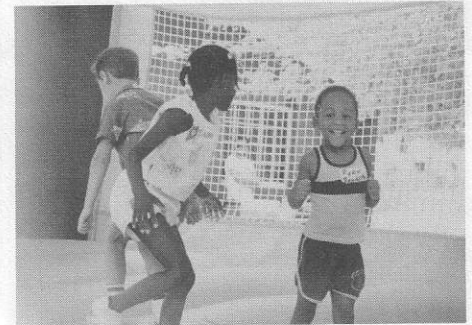
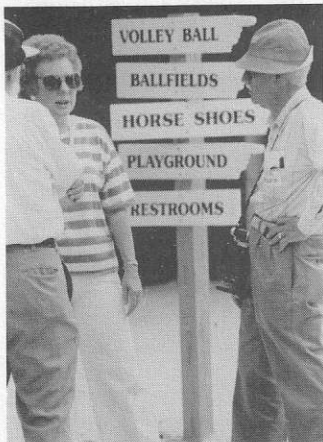
Vice President and General Manager Talbot Huff congratulates John Flahive (center, left) and Rene Plourde (center, right) as Vice President of Systems Development Ed Isbell looks on.

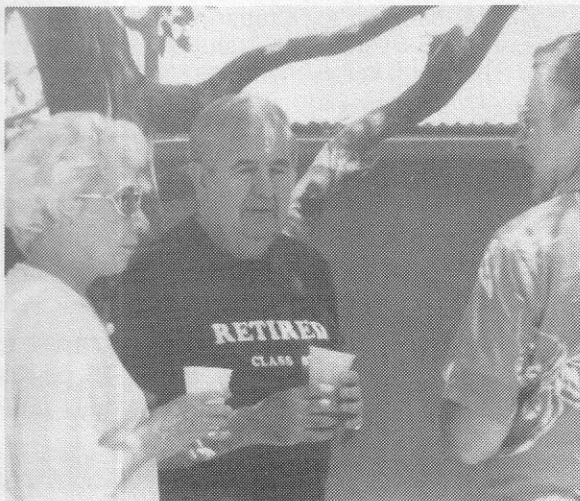
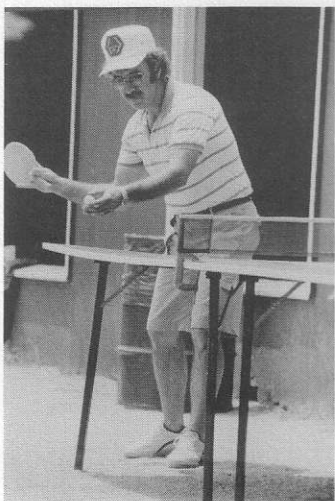
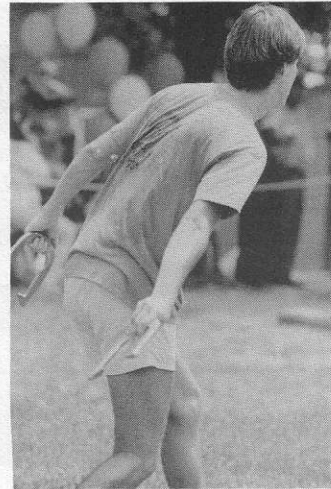
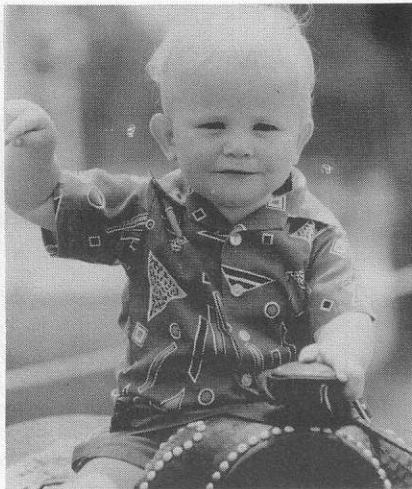


## 12th Annual COMPANY PICNIC

Despite hot weather and threats of rain, E-Teamers and their families enjoyed sharing the fun, friendship, and good food of Smokey Glen Farm at the Company Picnic on Sunday, July 12, 1987.

Photo credits to Lucy Murphy and Bill Ramsey.  
Photo Layout by Laura Turner.





## Picnic Door Prize Winners

1st Prize Ruth Diehl  
(\$25 gift certificate)

2nd Prize Diane Entner  
(\$15 gift certificate)

3rd Prize Ken Burns  
(\$10 gift certificate)

## FLEXCOMP FORM

## CREATING FLEX DOLLARS

## A. Medical Insurance

Option 1 2 ③ \$ 1239.68

## B. Employee Basic Group Life Insurance

Flex Dollars Created \$

## C. Normal Vacation Trade

Option 1 2 Days Traded \$

Hours Converted \$

D. Carry-over  
Vacation Trade

\$

E. Total Flex Dollars  
Created in A-D

\$ 1328.60

## SPENDING FLEX DOLLARS

## F. Medical Coverage Basic Cost

Plan A Option 1 2 ③ \$ 1452.88

## G. Employee Contributions

Plan A Option 1 2 ③ \$ 182.52

## H. Dental Insurance

Option 1 2 3 4 \$

## I. Cancer Insurance

Option 1 2 3 \$

## PAY CHECK STUB

## CURRENT HOURS/EARNINGS

TYPE	HOURS	CURRENT EARNINGS	YT
REGULAR	80.00	964.01	13
OVERTIME	.00	.00	
HOLIDAY	.00	.00	
SICK	.00	.00	
VACATION	.00	.00	1

DESCRIPTION	CURRENT	YE
MED. ELECTION	62.90	
DENTAL INS.	8.24	
CANCER INS.	2.20	
WKLY ACC & SICK	2.90	
VOL. LIFE INS.	.00	
DEP. LIFE INS.	.00	
ADDD INS.	2.76	
SEEA-DEPENDENT	2.50	
SEEA-MEDICAL	.00	
ADDDL TIME OFF	7.35	
SUBTOTAL	88.85	1
T-CAP DEPOSIT	50.00	
FEDERAL TAX	94.12	
FICA	66.23	
STATE TAX VA	31.20	
UNITED WAY	.00	
CREDIT UNION	25.00	

## SUMMARY

DESCRIPTION	CURRENT	YEAR TO DATE	DESCRIPTION	CURRENT	YEAR TO DATE
GROSS EARNINGS	964.01	16,845.75	FICA WAGES	926.26	16,185.51
FLEX \$ CREATED	51.10	766.50	W-2 EARNINGS	876.26	15,785.73
FLEX \$ SPENT	138.85	1,826.52	NET EARNINGS	638.21	12,061.30
OTHR DEDUCTIONS	238.05	3,724.43			

## How to Figure Your Medical Benefit Costs

One of the advantages of FlexComp is that benefit costs are added together and deducted from your pay *before* taxes are computed. In order to reduce your taxable earnings, the Company contributions are not added in until later. This makes your cost for the Medical Election benefit appear larger than it really is. In order to determine the *actual* Medical Election expense, you must relate the paycheck stub to the FlexComp form. (See sample forms.)

The first ten benefit deductions (highlighted on the sample paycheck stub) are pre-tax FlexComp deductions subtracted from your gross earnings before social security (FICA), federal, and state tax withholdings. The before-tax subtotal added to your T-CAP deposit\* equals "Flex \$ Spent," which is entered on the bottom left hand corner of your pay statement.

The item on your paycheck stub, "Flex \$ Created," is equal to Item E on your FlexComp form, "Total Flex Dollars Created," divided by 26 pay periods. This dollar amount is being added to your gross earnings each pay period. The amount of "Flex \$ Created" includes the Flex dollars that the Company contributes toward your medical plan, life insurance, and payment for any vacation hours traded.

The difference between "Flex \$ Created" and "Flex \$ Spent" is an amount added or subtracted from your gross earnings depending on which of the FlexComp benefits you chose.

NOTE: If you were hired after October 1, 1986, your stub will reflect "0.00" under "Flex \$ Created" because E-Systems is contributing directly to the insurance companies for your benefits rather than supplying you with Flex dollars. Next year, you will begin to create Flex dollars.

The dollar amount listed next to Medical Election is not your out-of-pocket expense. To determine the actual amount that you pay for medical insurance, refer to your FlexComp form and follow these steps:

1. Under "Spending Flex Dollars," add (F) Medical Coverage Basic Cost to (G) Employee Contributions.
2. Skip back up to "Creating Flex Dollars" and subtract A) Medical Insurance (E-Systems contribution) from the total in step 1. above.
3. The result is the employee's annual expense.

Below is an example of a calculation for an employee with Blue Cross Family Plan A:

	\$1,452.88	(F) Medical Coverage Basic Cost
	+ 182.52	(G) Employee Contribution
STEP 1	\$1,635.40	Total Annual Medical Insurance Cost
STEP 2	-1,239.68	(A) Medical Insurance—E-Systems Contribution
STEP 3	395.72	Employee's annual expense
	÷ 26	Divided by 26 pay periods
	\$15.22	Employee's biweekly expense

The dollar amount listed next to Medical Election on your pay statement reflects both your contribution and E-Systems'. It is determined by taking total cost (STEP 1. above) and dividing by the 26 pay periods.

STEP 1	\$1,635.40	Total annual medical insurance cost
	÷ 26	Divided by 26 pay periods
	\$62.90	Medical Election

Although this appears to be a complicated manner of deducting insurance premiums, it allows each employee to lower his or her *taxable* earnings by the amount that is deducted for FlexComp benefits, therefore *maximizing* take-home pay.

\* Your T-CAP deposit is state and federal tax deferred, but is subject to FICA taxes.

M

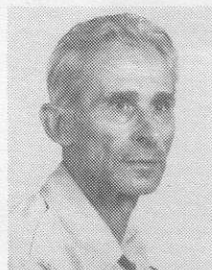
## RETIREES



**Carl Gammon**  
18 years



**Lucille A. McVay**  
30 years



**Joseph M. Pires**  
7 years



**Roger E. Paine**  
24 years



**Mary Stevens**  
4 years

### Correction:

Nora Flick retired after 29 years of service. We apologize for the error in the June edition.

### PAPERS Cont. from page 3

Melpar's credibility, but they project the image of Melpar as a 'high-tech' industry," said Dick Kolasheski, Director of Business Planning and Support.

Plourde and Flahive agree that it is also important that engineers document their work so that others may benefit from their knowledge and experience. "Writing increases the flow of information," said Plourde, "and it helps prevent duplicate efforts."

Both authors said they procrastinated about writing the articles, but once they finished they realized that the benefits far outweighed the effort involved. And, as Flahive commented, "Engineers typically have trouble writing, and they face it with discomfort. But, like anything, it becomes easier once you've done it."

## PROMOTIONS — MAY AND JUNE

### Falls Church

	From	To
K.N. Carter	Planning Asst	Planner
G. Collins	Assoc Systems Eng	Systems Eng
R.P. Craven, Jr	Eng Tech	Sr Eng Tech
T.A. Dent	Maint Mech	Maint Mech 1cl
D.F. Dohnalek	Programmer	S/W Analyst
S.L. Fleming	Machinist 1cl	Machinist 1cl Grp Ldr
J.B. Garrison	Receiving Clerk	Sr Rec & Ident Clerk
T.L. Gausmann	Jr Cost Analyst	Cost Analyst
J.A. Gavenas	Assoc Mech Eng	Mech Eng
J.H. Gigler	Eng Tech	Sr Test Tech
R.L. Hitchner	Assoc Mech Eng	Mech Eng
L.C. Hopkins, Jr	Programmer	S/W Analyst
T.M. Howe	Drafting Aid	Data Entry Opr
R.J. Jansky	Programmer	S/W Analyst
R.A. Jaskowiak	Report Typist B	Report Typist A
V.R. Joyner, Jr	Systems Eng	Sr Elec Eng
D.A. Kilgore	Prin Log Eng	ILS Supv
T.A. Kirk	Programmer	S/W Analyst
D.F. Krintz	Assoc Systems Eng	Systems Eng
V.S. LaRosa	Jr Cost Analyst	Cost Analyst
C.L. McGowan	Sr Fld Eng Tech	Fld Design Eng
V.L. Messner	S/W Analyst	Sr Programmer
J.H. Mihal	Systems Support Coord	Repairs Supv
D.A. Millberry	Acct Pay Clerk	Sr Acct Pay Clerk
R.D. Murphy	Programmer	S/W Analyst
D.M. Nguyen	Assoc Indust Eng	Indust Eng
J.A. Northcott	Eng Tech	Sr Eng Tech
J.P. O'Malley	Elec Eng	Sr Elec Eng
B.L. Osteguinn	Planning Aid	Planning Asst
D.M. Overstreet	Prin Eng	Eng Supv
G.J. Patty	Fld Design Eng	Sr Fld Design Eng
S.F. Pemberton	Elec Eng	Sr Elec Eng
R.H. Poppe	Sr Design Eng	Training Support Supv
J.A. Purdy	Sr Indust Eng	Prin Indust Eng
E.F. Reynolds	Prin Eng	Eng Supv
A.L. Ryman	Exec Sec	Contract Spec
D.E. Savell	Programmer	Sr Programmer
R. Tenaglia	Methods Eng	Sr Indust Eng
J.A. Thomas	Prin Eng	Program Mgr
A.S. Tribbie	Programmer	S/W Analyst
D.A. Whiteside	Sr Eng Tech	Fld Design Eng
S.A. Winters	Jr Cost Analyst	Cost Analyst
R.A. Young	Porter	Porter Grp Ldr

### Fairfax

C.J. Chausse	Prin S/W Analyst	Software Supv
B.D. English	Sr Elec Eng	Prin Eng
C.M. Garrity	Report Typist A	Sr Report Typist
M.T. Gizzi	Programmer	S/W Analyst
W.D. Haworth	Elec Mech Insp	Elec Mech Insp 1cl
A.G. Hupke	Sr Elec Eng	Prin Eng
R.A. Ishimoto	Sr Elec Eng	Prin Eng
J.M. Jessup	S/W Analyst	Sr S/W Analyst
R.J. McNamee	Assoc Elec Eng	Elec Eng
D.W. Mumma	Sr Elec Eng	Prin Eng
A.L. Rodriguez	Sr Test Tech	Jr Test Eng
F. Roll	Programmer	S/W Analyst
C.D. Roller	Assoc Elec Eng	Elec Eng
R.M. Sanetrick	Programmer	S/W Analyst
E.I. Scarlett	Assembler 1cl	Assembler 1cl Grp Ldr
M.A. Trbovich	Jr Test Eng	Assoc Test Eng

"One really nice thing," Flahive continued, "is the support that you receive from the Business Planning and Support group of Employee Relations. They take care of all the details involving approvals, etc., that are needed to get the article published. They know the channels, and they get the job done right."

Employees interested in publishing articles relating to Melpar business should consult section GA 13 of the Melpar *Procedures Manual* entitled "Preparation and Publication/Presentation of Technical Information," or contact Susan Love of Business Planning and Support on extension 4120.

## GRAB YOUR PENCILS AND BOOKS . . .

The George Washington University School of Engineering and Applied Science will hold fall registration at the Falls Church facility at the end of August.

Students in the MS programs in Communications (EE) and Computer Science (CSci) will be able to register for the fall semester on Monday, 31 August 1987, from 4:30 - 7:00 p.m. Professor Pickholz will be available for individual academic counseling during registration, or you may contact him at (202)994-6538.

George Washington University will be offering six courses in Electrical Engineering and four courses in Computer Science. The following course schedule is provided for your information:

- EE 204 Stochastic Signals and Noise—Mondays, Sept. 14 - Dec. 14  
Prerequisite: ApSc 115 or equivalent
- EE 205 Stochastic Processes in Electrical Engineering Thursdays, Sept. 10 - Dec. 17  
Prerequisite: EE 204 or equivalent
- EE 243 Communication Theory I Thursdays, Sept. 10 - Dec. 17  
Prerequisite: EE 204 or equivalent
- EE 248 Computer Communication Networks I—Tuesdays, Sept. 10 - Dec. 17  
Should be taken in sequence with EE 249
- EE 258 Radio Communications Systems I—Tuesdays, Sept. 8 - Dec. 8  
Prerequisite: EE 206, 244
- EE 297 Special Topics in Electrical Engineering: Advanced Digital Signal-Processing Techniques—Mondays, Sept. 14 - Dec. 14
- CSci 203 Microprocessors and Microcomputers Wednesdays, Sept. 9 - Dec. 9  
Prerequisite: CSci 147 and 154 or permission from faculty adviser
- CSci 227 Management Information Systems and Data Base Management—Mondays, Sept. 14 - Dec. 14  
Prerequisite: CSci 158, 159

CSci 232 Automata and Formal Languages—Wednesdays, Sept. 9 - Dec. 9  
Prerequisite: CSci 153, 158, 159, 161

CSci 258 Advanced Programming Languages—Tuesdays, Sept. 8 - Dec. 8  
Prerequisite: CSci 159

Each class meets one night per week from 6:00 - 9:00 p.m. All courses carry 3 credits.

Tuition is \$1,080 per course and may be paid in full at registration, in installments, or by credit card (VISA, Choice, or Mastercard). Books and all administrative forms will be available at registration.

For general assistance on administrative matters, please contact GWU Program Coordinator Lee Martin at (202)994-7024. **M**

---

### MELPARTICULARS

needs your input. Submit material to  
Dee Boysen, ext. 2717

---

## YOUR TELEPHONE . . . DID YOU KNOW?

The use of the telephone for personal calling is almost universally construed as being a company benefit. On the average, most users are reasonable about their telephone usage. However, there are people making an excessive number of non-business calls within the C&P operating area. This is escalating the cost of message units for our Company.

A message unit is a fixed cost per minute charged to Melpar by the telephone company for local calls. The number of message units charged per call is directly proportional to the length of the call. We realize that sometimes it is necessary to make a personal call during the day. However, please understand that local calls from your unrestricted home phone are included in a set cost, but every local call from your Company phone is charged at least one message unit.

You can help reduce the escalating cost for local calls by asking yourself if you really need to use the phone. If you do, make your conversation short and sweet. Don't call for the time or weather — that costs us message units, too. Please help us to reduce these costs. **M**

## Sports Corner

### GOLF HIGHLIGHTS

The Melpar Golf League concluded the first half of its season on 20 July, with an intensely competitive round for the eight play-off spots. The league consists of 36 golfers competing in match play for points at the Penderbrook Golf Course. The top eight players (in terms of cumulative points) at the end of each half of the season make the play-offs. The eight finalists for the first half are, in order of finish, Jim McDaniel, Tom Bridges, Brian English, Ron Woodruff, Hans Rienderhoff, Tom McCloy (ESSG), Bill Lawson (ESSG), and Tom Young.

The following golfers were noted for individual performances:

Low Gross: Don McCloy - 37  
Low Net: Jeff Cola (ESSG), Mike Dutchak, Ron Stanton - 28  
Low Handicap: Bill Lawson, Don McCloy - 3  
Closest-to-the-Hole (#4): Bill Lawson, John O'Malley - 8 feet

The second half of the season is expected to finish in late September. Substitutes are always needed. If you are interested, call Mike Dutchak on extension 2702. **M**

### VOLLEYBALL ANYONE?

September marks the beginning of the Fairfax County Adult Volleyball Council, and the Melpar Maulers are looking forward to another winning season. Employees interested in joining the co-ed volleyball team should contact either Joe Bickford or Jim Nesmith on extension 4046 by 31 August. **M**

## Library Up-date

Early this fall, the Technical Library will be moving to the fourth floor annex in Falls Church where the Vendor Catalogs and the Specifications and Standards Center are now located. The three collections will be consolidated in an effort to centralize the library services at Melpar.

The new Technical Library will be staffed by both Librarian Sandra Blumberg and Assistant Librarian Judy King during normal working hours.

Once the move is complete, employees may obtain information regarding any of the three library services by simply dialing extension 2157 or 2812. **M**