

# MELPARTICULARS

Volume 4, Number 1

E-Systems, Melpar Division

February 1983

## CHILDREN'S HOSPITAL FUND NETS \$5,770 FOR OXYGEN MONITORING SYSTEM



Winner of gourmet cheese basket, held by Betty Owens, is picked by Georgia Wilson and Talbot Huff.

Ethel Lorenzo, Marion Lugar and Stephanie O'Rourke present check to Brewster Terry of Children's Hospital.



Melpar employees have once again shown the true Holiday spirit by helping to raise over \$5,770.00 for the young patients at Children's Hospital. As in years past, employees contributed to the Children's Hospital Fund in lieu of sending greeting cards to one another.

The goal for this year's drive was to raise the \$5,600.00 needed by Children's Hospital to purchase an oxygen monitor system to be used with the infant transport vehicle. By monitoring the mix of oxygen in a newborn's blood during transport to the Hospital, a trained medical staff can frequently prevent the occurrence of such damage as blindness.

This year's drive was organized by our departmental secretaries and typists and co-chaired by Marion Lugar and Betty Owens of the Personnel Department. Each secretary chose her own method for running the drive after having received basic instructions at a Kick-Off Tea held on December 13. Stephanie O'Rourke of the Publica-

tions Department designed a delightful card to be presented to the children at the hospital. The card of snowy winter scenes with cotton-tailed rabbits enjoying their winter pastimes contained many warm greetings from our employees.

The campaign concluded on Monday, December 20 with the announcement of the total amount collected and with the award of a gourmet cheese basket to Bob Hood of the Security Department. Talbot Huff, together with Georgia Wilson, who is retiring from the Accounting Department this month after 30 years of service, drew Bob's name from a basket full of contributors.

We can all be proud of our efforts on behalf of Children's Hospital. When the check was presented on Wednesday, December 22, Mr. Brewster Terry, the Hospital spokesman, indicated that the check was for an unusually large amount, and that efforts by people like those at Melpar enable the special work of Children's Hospital to continue.

## E-2 IS HERE ... AND E-3 IS IN CONSTRUCTION

With the completion of E-2, the center building of the Melpar-Fairfax complex, Melpar has added another 60,000 square feet of space. This building will provide additional laboratory, assembly, and office space for the growing Melpar Division.

On the first floor, expanded services for Fairfax include an enlarged personnel area and dispensary, new quarters for Security and Document Control, and a mailroom which handles both the internal and external mail for the facility. A receiving and shipping capability has also been added, although the majority of the activity will continue to be processed at the Falls Church facility.

The newly designed cafeteria is of particular interest to those at Fairfax who were brown bagging and eating vending machine lunches. The full-service employee cafeteria offers hot entrees as well as a deli line. The dining area has been designed to allow room for upcoming expansion as we move into the third phase of construction.

Construction on the third phase (E-3) has started, and occupancy is scheduled for early 1984. During the construction stage, new parking areas have been added, and traffic routes have been redesigned to accommodate construction crews. When E-3 is finished, 100,000 more square feet will complete Melpar-Fairfax with a total of 215,000 square feet of space.

PHOTOS on page 5

## CAREER OPEN HOUSE AND BONUS REFERRAL PROGRAM BRING APPLICANTS TO MELPAR

A 2-day Career Open House was held at our Falls Church facility on Friday and Saturday, January 28 and 29. This was an opportunity for managers from both facilities to give working engineering professionals an introduction to Melpar. Applicants had the opportunity to view the Falls Church complex and talk with technical managers. Radio, TV, and newspaper advertising during the preceding week con-

CAREER OPEN HOUSE Cont. on page 3

## 39 EMPLOYEES NOW CERTIFIED IN CPR



1st row, left to right, seated: Ray Eisenbaugh, Phyllis Cove, Monica McMahon, Norma Hayden, Shirley Kissinger, Peggy Lewis, Debbie MacClary Anne Simmons, Ann Donnelly, Susan Duvall. 2nd row: Becky Testa, Peggy McTamany, Sandy Givan, Bob Meck, Dick Whynall, Cal Baker, Bill Barber, Dick Taylor, Bob Hohl, Steve Floyd, Frank Boyko, Connie Pruitt, Jane Kinzler. 3rd row: Russ Stewart, John Heath, Norm Taylor, Bob Haggerty, Ned Wright, Rudy Polak, Walter Maxwell, Greg Taylor, Kathy Sampson, Cletus Cave. Missing: Jeff Beigie, Bev Hudson, Pete Piraneo, Reid Earley, John Hale, Mike Paljug.

## Security Spotlight

Some Melpar employees have been phoned by individuals desiring information about an employee's security clearance, accesses, level of classified performance on specific programs, working hours, and other personal or sensitive information. Usually the caller does not leave a return call number, nor does he/she provide full identification. Some of these calls were originated from within the DOD and have been determined to be valid inquiries. However, they were addressed to specific employees in lieu of the correct procedure of contacting the Industrial Relations Department or the Security Department. Employees are cautioned not to reveal information which would ultimately result in a breach of security and/or proprietary disclosure procedures.

All personnel who receive a telephone request of this nature should request the Melpar telephone operator to transfer the call to extension 2288 (Security Department) or 1568 (Industrial Relations).

## BLOOD DONOR DAY SET

Melpar's first Red Cross Donor Day for 1983 is scheduled for the Falls Church facility on Tuesday, February 22. In order to accommodate the greater number of donors, the blood mobile will be set up in the rear of the cafeteria. A mini-mobile will be held at the Fairfax facility on Friday, March 4.

If you are interested in donating blood, call Nurse Shirley Kissinger, ext. 2206, for an appointment. This is a worthy cause; it deserves your continued support.

### MELPARTICULARS

Published by  
E-Systems, Melpar Division  
7700 Arlington Boulevard., Falls Church, VA 22046

Editor: Jane Kinzler  
Photographers: Sandra Dimond  
Pete Piraneo, Richard Sakamoto

Production: Estelle Fellman  
Debbie Vetter (typesetter)

Contributors: Mary Albertson, Bob Braun, Mike Dutchak, Bob Hood, Karen Jones, Art Keene, Marion Lugar, Wilber Lund, Hal Marine, Jerry Moore, Richard Moore, Jane Simms

## Credit Union News

Since January 3, 1983, the Credit Union's business hours are 10:00 a.m. until 2:00 p.m. Monday through Friday. It is located on the cafeteria level of the Falls Church facility next to the cafeteria office.

With the extension of operating hours comes a new service. The Credit Union is now cashing personal checks for *all Melpar employees!* This service, offered during normal office hours is limited to \$25.00 per check.

Now is the time to start making plans to attend the 10th Annual Meeting of The Melpar Employees Federal Credit Union. The meeting will be held in the Falls Church cafeteria at 5:15 p.m. on February 25. This year's meeting will consist of a "Snack Time" followed by a short business meeting. Annual reports to the members and the election of members to the Board of Directors and Credit Committee will make up the business agenda.

Tax note: total dividend earnings and loan interest paid are indicated on your December 31, 1982 statement.



## FRANK BROWN AND MARION LUGAR ADDRESS HIGH SCHOOL STUDENTS ON CAREERS

As part of Melpar's continuing commitment to preparing young people for the world of high technology jobs, two of our employees recently participated in several career days at local schools.

Frank Brown, of the Publications Department, spoke to a class of art students at Robinson High School in January. Frank has been invited to speak 3 consecutive years.

In the same month, Marion Lugar of the Industrial Relations Department, addressed high school classes at Chantilly, Fairfax, and South Lakes. At Chantilly, forty students, who had already enrolled in the school's Basic Electronics course, attended her discussion on careers in electronics. At Fairfax and South Lakes, over one hundred students attended the discussion of careers in computer science and engineering.

Both Marion and Frank were impressed with the level of training the students are currently receiving in high school. They found that the facilities at the schools were sophisticated and that the courses taught were ad-

vanced for the high school level. At Fairfax High School, for example, a number of students were learning COBOL, BASIC, and several other computer languages.

Whether they were studying art, electronics, or computer science, the students' questions were practical. First and foremost, they were interested in knowing what additional schooling was required and the kind of remuneration they could expect to make in their chosen fields. Promotional opportunities and job stability were main concerns to the students. Marion and Frank both concluded that some outstanding future employees are being trained in our county schools.

### CAREER OPEN HOUSE Cont. from page 1

tributed to the success of the Open House.

In coordination with the Career Open House, the Industrial Relations Department has revised the Bonus Referral Program for 1983. Employees who refer qualified applicants hired by Melpar are eligible for a bonus. The applicants for these positions must have a minimum of 2 years directly related experience, a B.S. degree, and U.S. Citizenship. Resumes of qualified applicants should be submitted for review to the Industrial Relations Department's Employment Section.

The following is a list of openings at Melpar, all of which require at least 2 years experience. Those positions with an asterisk qualify for the bonus referral program.

- \*Digital Engineer
- \*Analog Engineer
- \*R.F. Engineer
- \*Antenna Engineer
- \*Telecommunications Engineer
- \*Signal Processing Engineer
- Test Engineer
- \*Sr. Systems Engineer
- Design Engineer
- \*Software Analyst
- \*Programmer
- Field Technician
- Mechanical Engineer
- Planning Specialist
- \*Program Manager
- \*Quality Engineer
- \*Software Quality Engineer
- Sr. Subcontracts Administrator

Specific questions about the Bonus Referral Program should be directed to Charlie Johnson, ext. 2955; Evy Lowenstern, ext. 1545; or Jerry Moore, ext. 1584.

## FIVE GW COURSES OFFERED AT MELPAR

The GW University School of Engineering and Applied Science has completed another successful registration at our Falls Church facility. Out of a total of 75 course enrollments, Melpar accounted for 34.

For the spring semester, five courses are offered at Melpar: EE 241, Information Theory; EE 243, Communication Theory I; CS 154, Digital Computer Design; CS 158, Algorithmic Methods and High Level Languages; and CS 227, Management Information Systems and Data Base Management. The GW program at Melpar is offered in cooperation with participating members of GWU's Industrial Liaison Program and leads to a master of science degree in electrical engineering with a concentration in the field of communications or a master of science degree in computer science.

Professor Raymond L. Pickholtz, the Melpar Program Academic Advisor is on a sabbatical for the next six months. Standing in for him is Professor Douglas Maurer, who can be reached at 676-6569 and at ext. 2478. For administrative details, contact program coordinator Ed Wright at 676-7024, and watch the bulletin board on the GW office door at Melpar.

## MORSE CODE CLASSES OFFERED BY RADIO CLUB

Melpar's Amateur Radio Club held its annual election on January 5, 1983. The newly elected officers are as follows: Mac Mercer, N4EFK (amateur radio or ham call sign), President; Robert Hall, KA4WSV, Vice-President; and Wilber Lund, KA4WSV, Treasurer/Secretary.

Morse code classes are held every Thursday at noon in the Camden Room at Falls Church. These classes are designed for those interested in getting their amateur radio license. The requirements for a novice's license include receiving Morse code at a speed of five words per minute, taking a written test that combines FCC (Federal Communications Commission) Rules, and having a knowledge of electronics. To assist interested employees further, the club has placed a set of amateur radio related books and code practice tapes in the Melpar library.

New members of all skill levels are encouraged to join the club. Regular meetings are held on the first Wednesday of every month in Fred Morley's office at the Falls Church facility.

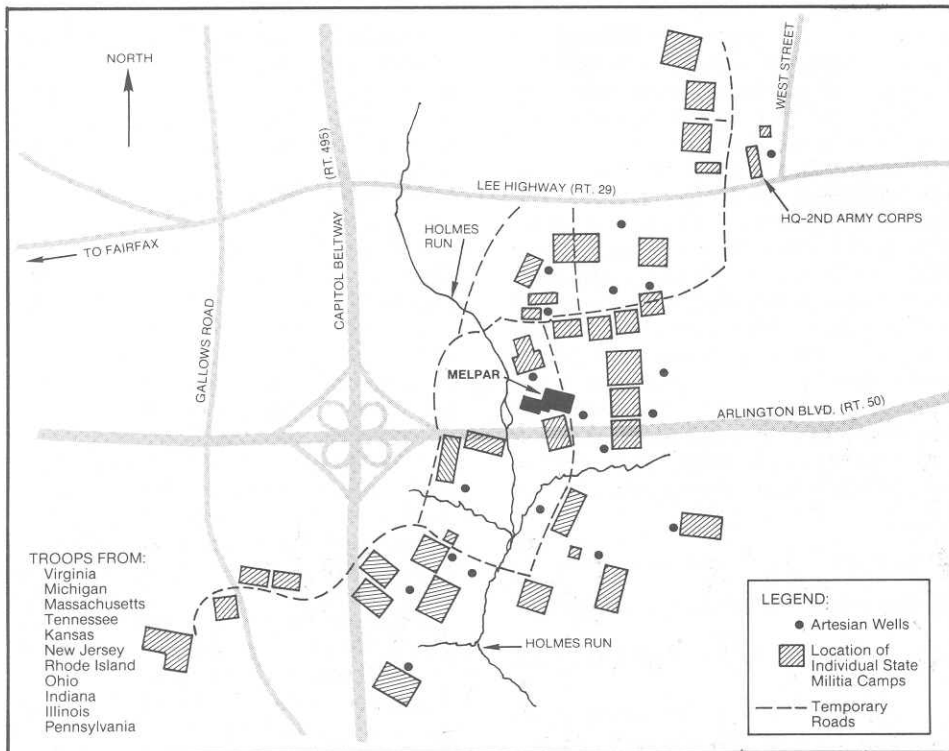
## Library Up-date

To provide better service to our users' needs, the library is in the process of a systematic recall of all overdue material. In spite of the librarians' endeavors to keep close track of borrowed material, many books and periodicals have been misplaced. Considering the number of moves, assignments to the field, and the normal attrition, it is even more essential that material be located and made available for others.

Temporary replacements of specific books can still be requested through interlibrary loans. This process, however, takes time, and often popular titles in our library are already checked out in other technical libraries. Increased cost of replacing technical books and the increased demand for materials make it essential that we be able to locate items with a single phone call.

We appreciate your making the necessary efforts to locate any requested books in your area. For your convenience, please note that interoffice mail may be utilized for returning material, and renewals may be done by telephone. Thank you for your cooperation and patience in making the process work—we will all benefit by it.

## CAMP ALGER, VIRGINIA, 1898



Map taken from the Annual Report of the Major General in command, November 5, 1898. Location of current roads and Melpar are superimposed on the map.

### MELPAR LOCATED ON SPANISH AMERICA WAR ARMY CAMP SITE

E-Teamer, Art Keene, a senior design engineer at Melpar, is also an avid Civil War history buff. He is President of the Northern Virginia Relic Hunters Association, a group whose membership is approximately 150 and includes E-Teamers John Hale, Treasurer of the Association and Howard Willis. Members of the Association meet once a month and hold an annual Civil War memorabilia exhibition featuring artifacts from the Civil War and earlier.

According to Art, Civil War buffs have done considerable research locating camps in the Northern Virginia area. Almost by accident, it was discovered that the Falls Church facility of Melpar is geographically located in the center of what was known as Camp Alger during the Spanish-American War. The camp headquarters (2nd Corps) was located on the hill, within National Memorial Park, at the junction of Lee Highway and West Street. Numerous subcamps were scattered around the present site of Melpar, housing thousands of soldiers. These subcamps represented state militia units, the forerunners of the National Guard. Also located within camp limits were many artesian wells. The Falls

Church building is located on top of at least one, and possibly two, of these wells.

Compared with other events in American history, little is known by the average person about the "War with Spain" or the Spanish-American War other than "that's how the U.S. acquired Cuba and the Philippines." The lack of knowledge is somewhat understandable, since this was the shortest war in U.S. history. It lasted only four months and had the least amount of battle casualties, approximately 263.

The camp was named after Russell A. Alger, Secretary of War to President McKinley. It was established just after Congress declared war on Spain—April 21, 1898. Troops began to be assembled at various locations about the country to fight the war. In May, there were approximately 19,000 soldiers gathered here. This number increased to over 35,000 by the close of the war in August, 1898. During the war, President McKinley and other notables were frequent visitors to the camp.

When the war was over, the camp was quickly disbanded showing little vestige of the vast number of troops which had been located there. The area remained little changed over the



Members of the 2nd Army Corps stationed at Fort Alger—1898.



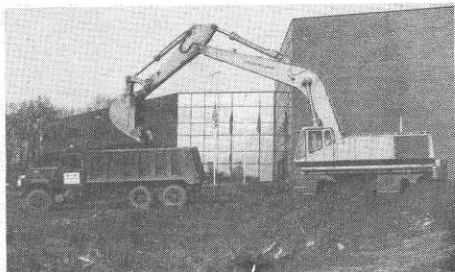
Representative artifacts found at Camp Alger site.

years until the construction of Arlington Boulevard (Rt. 50) and the subsequent building of the Falls Church plant of Melpar. Even today, much of the confines of Camp Alger have not seen the developer's bulldozer.

With the coming of electronic metal detecting devices, items long abandoned or lost have been recovered from the immediate area of the Falls Church plant. Typical finds are belt buckles, buttons, cartridge cases, canteens, and an occasional helmet plate. These relics, though not in abundance, attest to the vastness of the camp and the number of troops that once were stationed here.



## MELPAR-FAIRFAX



Ground breaks for E-3.



New cafeteria in action

## E-TEAMER'S SON HONORED

Michael Minter, eleven year old son of E-Teamer Jim Minter, has recently been notified that he is one of the top fund raisers in the Metropolitan Washington D.C. area for the Multiple Sclerosis Read-a-thon campaign. This year the campaign was conducted in 144 schools by 6,000 student volunteers. Michael collected \$284.60 in November from pledges in the Vienna, Virginia community.

For this super achievement, Michael and his parents were invited to Vice President Bush's residence for a special awards dinner on January 25th. The ceremony was hosted by the Vice President's wife as Honorary Chairman of the Multiple Sclerosis Organization. We all express our gratitude to Michael for his outstanding effort to help this worthwhile cause.

TRAVEL CLUB  
REPEATS OLD FAVORITES

The Melpar Travel Club is sponsoring its fifth annual 3-day trip to New York City. The trip is scheduled for May 13-15. The group will leave by bus on Friday morning, spend 2 nights in New York and return to Melpar Sunday night. The cost including transportation, 2 nights hotel lodging (double occupancy) and a Broadway show will be approximately \$150. Jane Simms in Accounting is taking reservations for this *whirlwind tour of the*

## Know Your Benefits... LIFE INSURANCE

Beginning January 1, 1983, Melpar employees experienced a change in their life insurance benefits with the adoption of a new plan designed to provide both basic and supplemental term life insurance coverage. At no cost to the employee, a basic life insurance plan is carried through Southwestern Life Insurance Company. It provides a coverage equal to the employee's annual salary rounded to the next higher multiple of \$1,000.00. The maximum amount of coverage under the basic life insurance plan is \$50,000. Coverage automatically begins on the date of hire when the employee completes a form designating the policy's beneficiary. Upon termination from E-Systems, the plan may be converted to a whole life policy and carried through age 65.

In addition to the basic life insurance plan, employees now have the option to enroll in a supplemental plan offered through Wabash Insurance Company. This additional policy offers employees the opportunity to sign up for term life insurance with a face value of up to five times their annual salary rounded to the next higher multiple of \$1,000.00. Premiums for the supplemental coverage are based on the amount of insurance selected and the age of the employee. Even though premiums increase with age, employees should realize a savings over the total period of employment.

The new supplemental life insurance plan with Wabash offers several advantages to employees over the old benefits plan. Designed to be an individual policy between the employee and Wabash, the plan eliminates any tax liability that may have been incurred as imputed income under the old group life insurance plan when basic and supplemental coverage exceeded \$50,000.00. A distinct advantage of this individual policy is that the supplemental insurance may be carried over with no increase in the cost of premiums should the employee leave E-Systems. Once enrolled in the Wabash plan, an employee is guaranteed the option of increasing up to five times the annual salary, to a maximum of \$300,000.00 of coverage, without being rated for medical reasons. This coverage may be continued through age 70.

During open enrollment periods, employees may increase or otherwise change their life insurance coverage. The optional insurance will not automatically increase with an employee's salary increases, but employees may adjust their coverage during this period to reflect salary increases, or changing personal needs. The supplemental coverage can be dropped at any time.

Should you have any questions regarding the new plans, contact Marion Lugar in the Industrial Relations Department.

## PROMOTIONS - NOVEMBER AND DECEMBER

FROM:	TO:
A.J. Stefanelli	Eng Supv
I.K. Lunn	Mgr, Bus Supt Systems
W.A. Huffman	Test Supv
R.G. Haggerty	Prin Test Eng
R. Schiller	Sr Systems Eng
V.M. Jordan	Planning Spec
A.F. Haley	Sr Planning Spec
G.R. Hollister	Test Eng
J.J. Leatherland	Sr Accounting Clerk
F. Benitez	Sr Met Tech
S.L. Tate	Sr Report Typist
C.S. Abbott	Assembler 1cl
J. Kittel	Assembler 1cl
J.M. Beigie	Sr Test Tech
	Test Tech

*big apple.*

In April is the annual Pennsylvania shopping spree. This popular trip to Reading's clothing outlets is scheduled for Saturday, April 30. The cost of \$21 per person includes bus transportation and dinner at the Dutch Good N'Plenty Restaurant. Contact Louise Hobbs in Personnel to make your reservations soon as this excursion fills up quickly.

## RETIREE

George Dively  
17 years at Melpar



## Sports Corner

### EAVESDROPPERS PLACE 2ND IN PRESEASON PLAY

The Melpar Eavesdroppers basketball team opened up the 1982-83 winter campaign in fine fashion by placing second in the Fairfax County bracket "3" Preseason Tournament. They won their first three games with scores of 76-38, 67-56, and 82-61 before losing the last one, 76-50. The leading scorer for these games was Tim Harvey.

Their fine preseason play was carried over into the regular season with victories in their first two games, 50-39 over the Revenooers and 76-48 over Jim McKay Chevrolet. This year's performance is again the result of fine team play on the part of Ronal Butler, Mike Christofferson, Brian English, Tim Garney, Greg Taylor, Ken Jaggart, Bill Georgen and Mike Dutchak.

### PROVIDENCE REC CENTER CELEBRATES 1ST YEAR WITH MELPAR SPECIAL

Our neighbor, Providence Recreation Center, celebrated its first anniversary on January 2, 1983. The Center, run by Fairfax County Park Authority, is located adjacent to the Falls Church High School at 7525 Marc Drive and is within walking distance of the Falls Church facility.

Over the past year, Providence Recreation Center has enjoyed helping our employees use their leisure time to *get in shape*. Providence offers a variety of facilities. In addition to its indoor swimming pool, handball/racquetball courts, and saunas, Providence recently opened a newly equipped weight room with universal gym and isokinetic equipment. Numerous physical fitness and aquatic classes are offered before and after work. For those interested in lap swimming, the heated indoor pool is open from 8 a.m. to 10 p.m. Monday through Friday with occasional schedule changes to accommodate high school meets.

If you haven't introduced yourself to Providence Recreation Center, now is the time to start. Providence is offering Melpar employees an anniversary special and thank you. With the presentation of a Melpar ID, employees will receive one-half off the price of daily general admission during the week of February 21 to 25.



Pictured with their trophies, from left to right, are: Bob Braun, Scott Oakes, Molly Hungerford, Rick Bordwell, Talbot Huff, Tom Neff, Bruce Jerome, Hector Munk, Tim Harvey, and Carmen Benitz. Missing from photo are John Cole, Mike Yoselle and Tim Garney.

### TENNIS AWARDS PRESENTED AT LUNCHEON

The Melpar Tennis Association congratulates all winners and thanks all participants for their active involvement in the 1982 tournaments. Tournament play extended through approximately 2 months ending with the finals in October.

Tournament participants attended the annual awards luncheon Wednesday, December 8, where Talbot Huff presented the winning trophy recipients pictured in the accompanying photo.

The tournament winners are as follows:

#### Mixed Doubles

- 1st place Carmen Benitz/  
Tom Neff
- 2nd place Molly Hungerford/  
Hector Munk

#### Doubles

- 1st place Tim Garney/  
Scott Oakes
- 2nd place Rick Bordwell/  
Bob Braun

#### B Singles

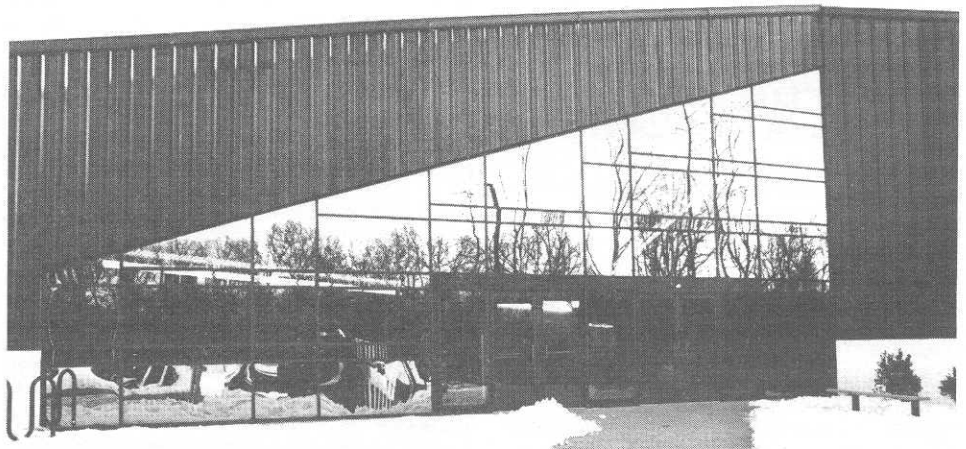
- 1st place Bruce Jerome
- 2nd place John Cole
- 3rd place Bob Braun

#### A Singles

- 1st place Tom Neff
- 2nd place Tim Harvey
- 3rd place Mike Yoselle

The 1983 season will open this spring with ladder play beginning in early May. The tennis ladder is open to all Melpar employees who have interest and/or ability in tennis. In past seasons, ladder players represented varied levels of experience and skill so that most players have been able to arrange enjoyable and challenging matches. Newcomers to the ladder and the tournaments are welcome.

A special invitation is made to women players of all levels so that a women's ladder can be activated this spring. Women's doubles and singles tournaments will be played in the fall.



Providence Recreation Center