

melpar-a-graph

MELPAR A Division of LTV Electrosystems, Inc.

Volume 17, Number 1

January 1972

1971 NEW BUSINESS EXCEEDS \$14.5 MILLION

Melpar bookings for 1971 exceeded \$14,500,000 with the major share coming from DOD agencies, especially the U.S. Air Force. Two significant contracts in 1971 came from Teledyne-Ryan and Greenville Division of LTV Electrosystems, Inc.

1971 EARNINGS IMPROVEMENT PROGRAM EXCEEDS DOLLAR GOAL

Final results from Melpar's 1971 Earnings Improvement Program exceeded the 1971 cost reduction goal of \$250,000 by almost 60% with total savings of almost \$400,000 recorded. This makes NINE consecutive years that Melpar has exceeded its goals.

The Procurement Savings Program of the Purchasing Department made a substantial contribution to the total with cost avoidance savings exceeding \$370,000.

For 1972, with a goal of \$300,000, we want to make it 10 years in a row, not only in exceeding the annual dollar savings goal but by total employee participation as well. If everyone submits at least one suggestion during this year, the number of suggestions will exceed any previous year.

You can still earn Savings Bonds up to \$200 for accepted suggestions. Submit your ideas on Form GO-0340 NOW. If you can't locate this form, write your idea on a piece of paper and send it to the Cost Reduction Administrator with your name. If you have questions regarding your suggestion, ask your supervisor or call Al Ross, Cost Reduction Administrator, on extension 2707.

The 1972 bookings outlook is promising with sizeable procurements expected during the first quarter. During the first three weeks in January new orders exceeded \$1,000,000.

Recently developed foreign markets produced \$1.6 million in 1971 with additional bookings expected in 1972.

HOSPITALIZATION PREMIUMS DEDUCTIBLE FOR INCOME TAX

With income tax filing time fast approaching, the following chart shows you the amount you may use in figuring your medical premium deduction.

In the past the Federal Income law has permitted you to deduct on an itemized return, one-half of your medical insurance premiums up to \$150, with the remainder being counted along with other medical expenses that exceed 3% of your income. Please check your 1971 tax instruction booklet to determine how to handle the premium deduction for 1971. Here are the figures you need:

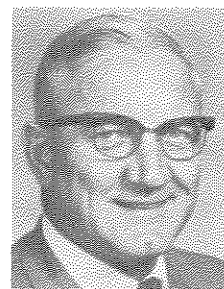
DEDUCTIONS EACH PAYDAY*

Base Payday Earnings	Single Coverage	Dependant Coverage
Under \$200	\$1.66	\$4.98
\$200-\$246.60	\$1.66	\$5.04
\$250.40-\$299.20	\$1.72	\$5.11
\$300-\$399.20	\$1.75	\$5.16
\$400 and over	\$1.82	\$5.27

*There were 26 paydays in 1971.

In this table, find your base payday earnings shown on your paycheck stub but don't include overtime or shift differential pay. In the appropriate column to the right, find the amount of your payday contribution to medical coverage. Multiply that amount by the number of paydays you contributed (26 if you worked the full year). The total gives you the amount you may use.

DIXON SPEAKS AT MANAGEMENT DINNER



JOHN W. DIXON

Mr. John Dixon, Chairman of the Board and President of LTV Electrosystems, Inc. was the principal speaker at Melpar's quarterly management dinner meeting held on January 27th.

Mr. Dixon gave a summary of corporate operations and results for 1971 and also answered questions which had been submitted to him by Melpar supervisory personnel.

WITHHOLDING REGULATIONS CHANGE

1972 changes in withholding regulations permit individuals to claim a new "special withholding allowance" if they qualify. Each single person or each married person whose spouse is not also employed is entitled to one "special withholding allowance" of \$750.

Another change—when you file your 1971 return you will be allowed \$675 for each dependent. This exemption goes to \$750 for your 1972 return.

The 1972 social security taxable wage base rises from \$7,800 to \$9,000. This means we pay social security tax until the new base is reached, a maximum tax of \$468.00. In addition, the company pays an equivalent amount for each employee.

SYMANOSKIE ASSISTS AMERICAN ORDNANCE ASSOCIATION

Chief Draftsman Joe Symanoskie has been requested by the American Ordnance Association to participate in a discussion meeting preliminary to establishing a review team for the U.S. Army Materiel Command.

The Commanding General of the Army Materiel Command has asked that the data items required to manage AMC programs be reviewed by an appropriate group of industry representatives to identify unnecessary items.

Undecided? . . . If you are undecided about whether or not to switch on your car lights, just remember that it is always better to switch them on a little too early than a little too late.

Going Up!

Promotions were earned by the following in December:

R. E. KENT
Supervisor, Support Services

V. E. WEEKS
Sr. Accounts Payable Clerk

V. A. NORMAN
Government Property
Control Administrator



GOLDIE KLINEPETER

GOLDIE WINS AGAIN . . . Recent winner of the Can-Am cup with scores of 90 on the first day and 84 the second day's round was Melpar's Goldie Klinepeter, Test Technician in Incoming Inspection. Goldie played with a handicap of 18 and ended the season with a 12. The tournament was held at the Chantilly National Golf and Country Club near Dulles International Airport in Virginia.

Her previous winnings at the Chantilly Club during the last three years include the Cedar Crest Cup, pewter candlesticks, Jefferson cups, a sterling tray and various items from the pro shop.



BYE-BYE BLENDA . . . Co-workers of Accounting Assistant Blenda Jones presented her with a farewell gift on Christmas Eve. Pictured left to right: Mary Amorosi, Georgia Wilson, Mozelle Dame-wood, Vice President T. D. Kelly, Controller Sam Dellinger, Blenda Jones, Accounting Supervisor Al Ross, Pam Schlie, Virginia Switzer and Betty Owens.

Blenda plans to take it easy and enjoy a trip to California to look at retirement property. She joined Melpar in 1959 as a Budget Clerk after serving with the Navy during World War II. Good luck and best of health to you, Blenda.

GRADUATE COURSES CONTINUE AT MELPAR

28 Melpar employees are enrolled for graduate courses sponsored by George Washington University and the American University.

Monday, January 24th, marked the start of the 11th semester of a GWU program at Falls Church leading to a Master's degree with a major in Management Engineering. One employee will complete his course requirements at the end of this term, all taken in the after-hour courses conducted at Melpar. Several other employees are in the top half of their programs.

GLITTENBERG'S SON WINS D.F.C.

First Lieutenant Donald R. Glittenberg, son of Melpar Senior Photographer Hank Glittenberg has been awarded the Distinguished Flying Cross by the U.S. Air Force.

Lt. Glittenberg received the following citation:

"First Lieutenant Donald R. Glittenberg distinguished himself by extraordinary achievement while participating in aerial flight as a C-130B Co-Pilot at Dak To Airfield, Republic of Vietnam. Lieutenant Glittenberg flew an extremely hazardous mission through adverse weather conditions and hostile ground fire to evacuate one hundred and ten besieged Vietnamese combat personnel. This mission was further complicated by poor visibility due to approaching darkness and extensive rocket damage to the runway. The professional competence, aerial skill, and devotion to duty displayed by Lieutenant Glittenberg reflect great credit on himself and the U.S. Air Force."

Cards of Thanks

The following persons have acknowledged with cards of thanks their appreciation for acts of kindness during periods of bereavement:

Mary Amorosi
Clifford Boland
Nora Kirby
Mary Wilson

Published by

MELPAR

A Division of LTV
Electrosystems, Inc.

7700 Arlington Blvd., Falls Church, Va.
Editor..... Jane K. Smith, Ext. 2706
Photographers..... R. K. Sakamoto
H. O. Glittenberg

The Christmas Party



Earl Rhue and son, and the Anthony Barrettas arrive at the party.



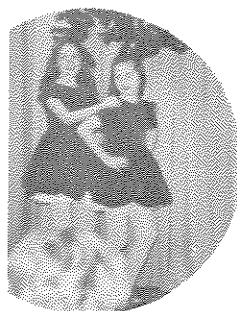
The William Stribling family admires Frank Hale's (standing, right) train display.



Entertainer Ranger Hal (front left) with Party Chairman Louise Hobbs (front right) and party hostesses Marguerite Weetman (standing, left) and Cathy Marty (standing, right).



These kids thought the Moppets were great.



The Moppets.



A group of "swingers" participate in the show.



Parents enjoyed the show as well as the children.

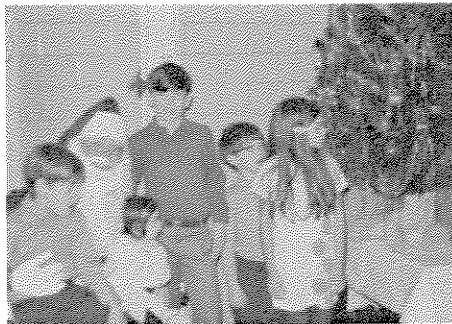


Photos by T. L. Wood



Santa interviews a prospective client.

More Party Pictures . . .



INSURANCE REPORT - 1971

Where did all that insurance money go?

The following figures reflect the claims processed for 1971 under Melpar's hospitalization insurance program.

A total of 1230 claims and additions were submitted. Of this total, 668 claims were for dependents. The following shows the distribution of claims payments:

PAYMENTS	AMOUNT	%
Hospital (Basic)	\$59,642.02	40.1%
*Major Medical	40,841.59	27.4%
Surgery (Basic)	21,050.53	14.2%
Weekly Indemnity	11,990.06	8.1%
X-ray and Lab	6,670.62	4.5%
Accidents	5,996.82	4.0%
Maternity (delivery)	2,575.00	1.7%
	<u>\$148,766.64</u>	<u>100.0%</u>

*Major Medical pays 80% of most costs after basic benefits have been exhausted and you have paid \$100. in charges.

Employee contributions to the insurance premiums were \$72,555.79 with the company making up the balance of the cost.

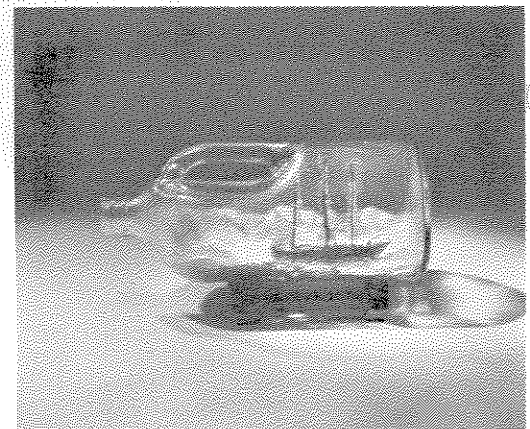
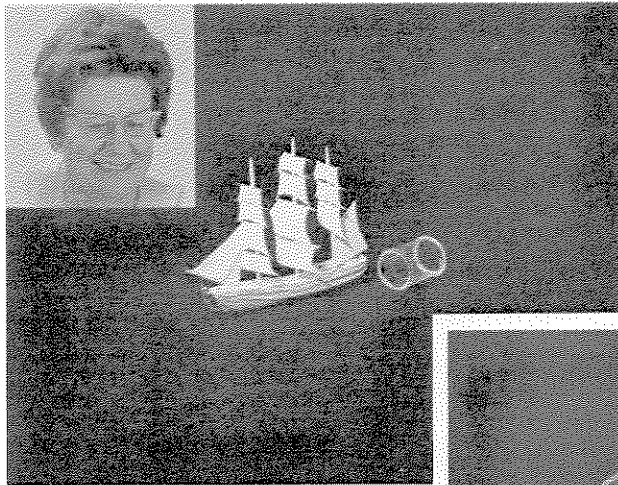
Battery Boost — or Bomb

Recently at a local shopping center, a driver found he had a dead battery in his vehicle. A passing motorist graciously offered help by providing a booster start with battery-jump cables. When the cables were connected, the battery blew up in his face. A man from a near-by auto rushed to assist the injured man by pouring beer into his eyes and over his face to wash away the battery acid.

This quick "First-Aid" action saved the man from severe burns and possibly permanent blindness. Later, two sutures were required to close a puncture wound near the man's right eye caused by a piece of flying battery casing.

By observing a simple safety rule, this near tragedy could have been avoided.

Santa, as usual, was the center of attention.



BOUNTY IN A BOTTLE . . . The lost art of putting ship models in old bottles was recovered at Melpar during the last three months of 1971 by Merle Burke (inset), of Melpar's Manufacturing Department.

She assembled an unusually accurate 4½" model of the armed merchant ship HMS Bounty complete with English noblewoman on the masthead, cannon and coiled rope on the deck and exact sail and mast plan from the jib at the bow to the spanker at the mizzenmast.

The model was built so that masts folded forward on hinge pins set in the deck. Sails were hung on piano wire so they could be forced through the neck of the bottle.

****Always remove the caps from both batteries when using jumper cables.**

Hydrogen gas (within the battery cells) expands rapidly during a charge and will cause a battery explosion unless properly ventilated. Caps are made with a small ventilating hole in the center which may become plugged with grit and oil. For this reason, many batteries are now made with pop-in/pop-out caps rather than the screw-in type. With this safety feature, the cap will blow out instead of the battery. Remember that in an emergency if a person's face has been sprayed with battery acid, it must be irrigated immediately with clean cool running water. If a

water faucet is available, the water should be allowed to flow directly into the eyes as gently as possible, and over the face or other exposed skin area.

ERROR ON UGF CORRECTED

In the Washington Post of Sunday, January 16th, an error indicated that the UGF had 25 Redskin season tickets.

The correct facts are that the Unit Fund, Walter Reed Hospital, owned the tickets and a reporter in haste wrote down United Fund in error.

United Givers Fund has no Redskin tickets—and never did.