

# melpar-a-graph

MELPAR A Division of LTV ElectroSystems, Inc.

Volume 16, Number 8

December 1971

## Apter Named Director Of Operations



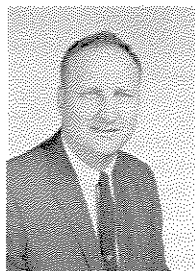
IRA APTER

The promotion of IRA APTER to Director of Operations was announced by Melpar's President J. P. Chambers on November 15th. Mr. Apter will also serve as Acting Director of Manufacturing.

Joining Melpar in 1952, he has served as Director of Engineering Services; Manager for Administration in the Avionics Department and Program Manager for all programs associated with the Simulator Department and Research Division.

He received his B.M.E. degree from Clarkson College. He also studied Electrical Engineering at Johns Hopkins University, and completed graduate courses in engineering administration at George Washington University.

## Dellinger Promoted To Division Controller



SAM DELLINGER

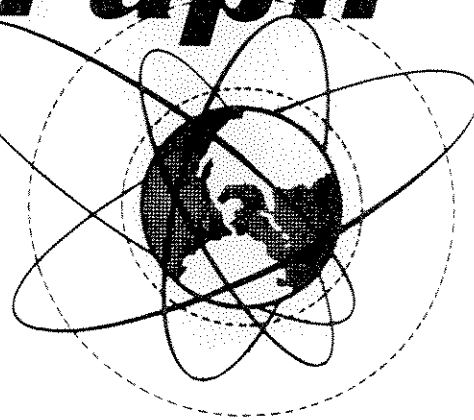
Promotion of SAMUEL T. DELLINGER to Division Controller was announced by T. D. Kelly, Vice President for Finance on November 15th.

In addition, Dellinger will assume responsibility for the Data Processing Department, a change designed to facilitate further utilization of the computer for accounting purposes.

Sam joined Melpar as a payroll accountant in 1954. In 1957 he became Payroll Supervisor.

In 1967 he was promoted to Chief Payroll Supervisor and in 1970, Manager of Accounting.

Sam received his B.S. degree in Commerce from Georgetown University.



## LTVE PAYS CASH DIVIDEND

The board of directors of LTV ElectroSystems, Inc., have declared a cash dividend for the fourth quarter of  $7\frac{1}{2}$  cents per common share to be paid December 29th, 1971, to shareholders of record December 13, 1971.

JOHN W. DIXON, chairman of the Board and President, said that this is the sixth consecutive quarter for which a dividend of this amount has been paid.

The board also declared the regular dividend on the company's \$2.60 Series B Cumulative Preferred Stock, payable January 1, 1972 to holders of record December 15, 1971.

## A Reminder . . .

Observance of Christmas will begin at noon, December 24th. There will be no cafeteria service that day.

## Holiday Calendar for '72

Company holidays will be observed on the following days:

New Year's Day  
Friday, December 31, 1971

Washington's Birthday  
Monday, February 21, 1972

Good Friday  
Friday, March 31, 1972

Memorial Day  
Monday, May 29, 1972

Independence Day  
Tuesday, July 4, 1972

Labor Day  
Monday, September 4, 1972

Thanksgiving Day  
Thursday, November 23, 1972

Christmas Eve (one-half day)  
Friday, December 22, 1972

Christmas Day  
Monday, December 25, 1972

## Coming Attraction -- Christmas Party December 19th

Melpar's 9th Annual Christmas Party for employees and their families will be held on Sunday afternoon, December 19th from 3 P.M. to 5 P.M.

Entertainment will feature local television personality, Ranger Hal and his friends, the Do Re Me's, a vocal group; and the Modeling Mopets, a group of fashion mannikins.

Santa Claus will be on hand with gifts for the children, and Frank Hale will again have his unique display of a model train on a moving track.

Refreshments will again be furnished by the Marriott Hot Shoppes, Melpar's cafeteria caterer.

Please use the North Parking lot, enter and leave by the North Door only.

We'll be looking for YOU at the party!



RANGER HAL



Left to right: Conrad Reifel, Swede Boreen and Pat Burke.

### THEY REMEMBER PEARL HARBOR ...

Three Melpar employees have first-hand remembrances of Pearl Harbor, December 7, 1941.

R. S. "Swede" Boreen was serving as Storekeeper 2/C aboard the battleship, U.S.S. Oklahoma. He heard the Sunday morning silence blasted and looked through a porthole just in time to see a Japanese plane launching a torpedo straight at the ship.

He hurried to his battle station and began securing watertight doors between compartments. The ship buckled and trembled, racked with repeated explosions. Oily water swirled to his waist as the Oklahoma listed and began to sink.

Swede clambered topside just as his shipmates were ready to batten the hatch, which would have sealed him in the compartment. Within minutes after the attack began, the stricken vessel slid under with hundreds of his mates trapped below decks.

Corporal R. L. "Pat" Burke with the Search-

light Battery, First Defense Battalion, stationed at the Marine Barracks, Pearl Harbor, had just finished breakfast and was getting ready to read the Sunday paper when the Jap planes started diving and dropping bombs. Everyone in the barracks rushed out, drew ammunition for their rifles and fired at the planes. The barracks were located midway between the Pearl Harbor Docks and Hickam Field, both prime targets about two to three hundred yards from the barracks which were strafed but received no bombs.

Machinist Mate 1/C Conrad Reifel was an engineer aboard the PT24 boat, part of Motor Torpedo Boat Squadron One. There were twelve boats tied up at pier 10 at the submarine base that fateful morning. As Conrad left the breakfast table to make make colors formation, the first plane flew directly over him headed for larger targets in the background. The PT boat escaped notice on that pass, but within moments the exploding bombs started and Conrad realized the war was getting very personal.

### ACTION WITHOUT RESULTS?

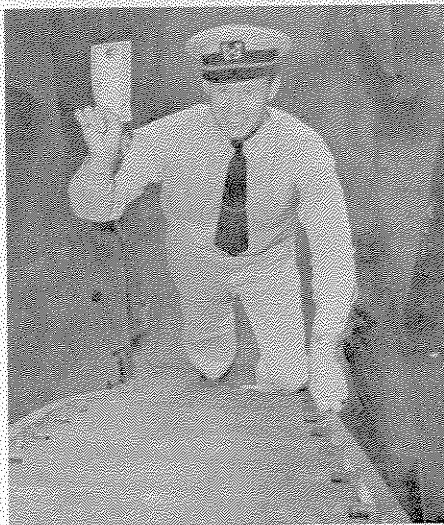
Processionary caterpillars feed upon pine needles. They move through the trees in a long procession—one leading and the others following—each with his eyes half closed and his head snugly fitted against the rear extremity of his predecessor.

Jean Henry Fabre, the great French naturalist, after patiently experimenting with a group of caterpillars, finally enticed them to the rim of a large flower pot. He succeeded in getting the first one connected up with the last one, thus forming a complete circle which started moving around in a procession, with neither beginning nor end.

The naturalist expected that after a while they would catch on to the joke, get tired of their useless march, and start off in some new direction. But not so!

Through sheer force of habit, the living, creeping circle kept moving around the rim of the pot, around and around, keeping the same relentless pace for 7 days and 7 nights—and would doubtless have continued longer had it not been for sheer exhaustion and ultimate starvation.

Incidentally, an ample supply of food was close at hand and plainly visible, but it was outside the range of the circle—so they continued along the beaten path.



Warrant Officer Boreen returned to his old ship on December 7, 1944 for the first time in three years for a Bond Drive Promotion. He is pictured climbing up the same ladder he used on December 7, 1941.

They were following instinct, habit, custom, tradition, precedent, past experience, standard practice, or whatever you may choose to call it—but they were following it blindly.

They mistook activity for accomplishment. They meant well but got no place.

Do you have a goal?

—Awareness

## CORPORATE IMAGE

(Editor's Note: This is the second in a series of excerpts from a 1971 speech by Joe Russell, Director of Corporate Relations of LTV Electrosystems, Inc., defining and describing how we can improve our relations with various "Publics" of LTV Electrosystems, Inc. These publics are our community, customers, employees, financial contacts and the press. In this issue, Mr. Russell discusses the employee.)

### GOAL:

To employ the best qualified people; motivate them to be increasingly more productive; instill pride in workmanship and loyalty built on mutual interest to the extent that the employee and his work are constant testimonials to the worth of the company.

### BENEFITS:

- Improved manpower utilization
- Better quality workmanship
- Greater job satisfaction
- More identification with company
- More improvement suggestions
- Less unproductive down time due to absences
- Better attitude transmitted to new employees by co-workers
- Good words about the company during off-job contacts
- Fair return for our payroll and fringe benefit dollars

### ACTION:

- Recognize the employee as an individual
- Reward performance and achievement
- Make jobs fit the employee's capabilities
- Encourage employee participation in deciding the best way to solve problems
- Remove as much routine from the job as possible
- Realize that the employee is looking for tangible accomplishments
- Increase responsibilities
- Provide advancement opportunities
- Listen to the employee's problems and follow-up with corrective actions

A company that takes steps to increase the dignity of the individual, be it inside or outside the company, takes a major step toward improving its image and enhancing the work environment of its employees.

Published by

**MELPAR**

A Division of LTV  
Electrosystems, Inc.

7700 Arlington Blvd., Falls Church, Va.  
Editor, ..... Jane K. Smith, EXT. 2317  
Photographers ..... R. K. Sakamoto  
H. O. Glittenberg



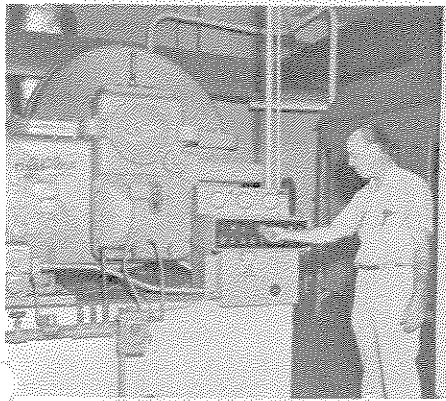
## Where The Action Is!

### Plant Engineering

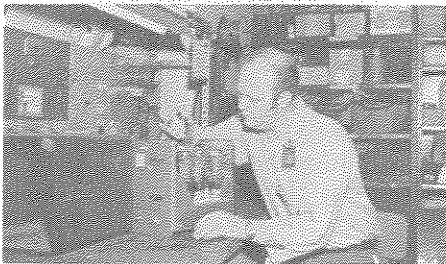
Plant Engineering is under the direction of R. Eugene Paine and is responsible for all Melpar building facilities, maintenance of grounds and parking lots.



Gracen Hanback operating the mower, cutting over 6 acres of lawn in front of the Melpar building.



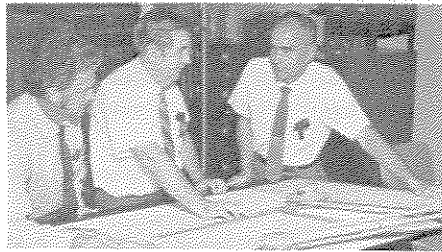
Jack Rodgers makes adjustments to the air conditioning controls. Automated systems control temperatures in the main building.



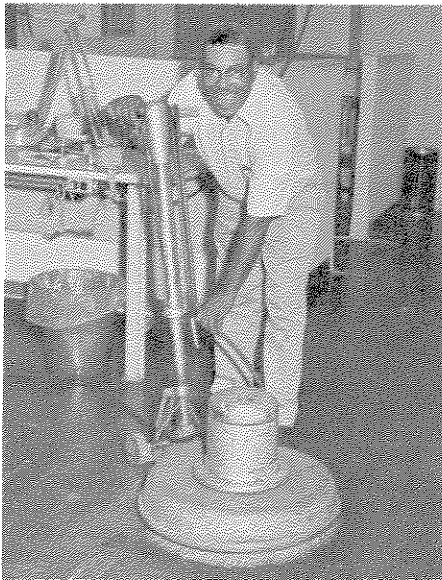
Charles Vannoy checks controls on an ultrasonic cleaner.



Marguerite Weetman and Herb Haas of the Telephone Company discussing moves and



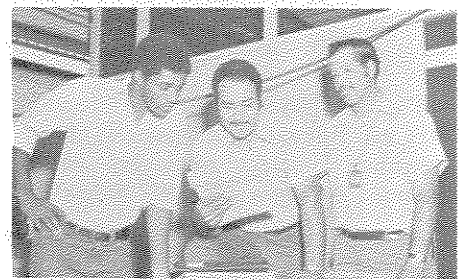
Sr. Facilities Engineer Bob Payne (left), Gene Paine (center) and Maintenance Supervisor Bob Overton review a blueprint to solve a layout problem.



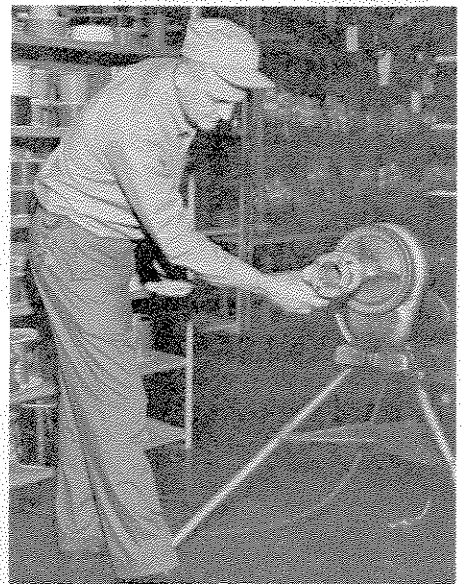
Thomas Gibson prepares to buff the floors with an industrial size buffer.



James Blevins checks a switch panel and James Peeler closes valve to the water tower



Left to right: Ronnie Jones, Foreman Herman Townsend and James Scott check plans for moving a group to a new location.



Charles Renalds threads a piece of pipe in the Maintenance workshop.



Plant Engineering Manager Gene Paine re-

## FOURTH QUARTER PIN LUNCHEON HONORS NINETEEN

The fourth quarterly pin luncheon of 1971 will be held in the cafeteria in mid-December. Nineteen employees will be presented pins honoring their Melpar ser-

vice years. Four employees will be marking 20 year anniversaries, 10 reach their 15 year milestone and five achieve 10 years of service.

### TWENTY YEARS



M. J. Barentine



Mary P. Hanson



Joseph D. Lewis



John E. Lofquist

### FIFTEEN YEARS



Anthony B. DePasquale



Cletus A. Fox



Robert R. Gerber



Weston R. Goode



Charlotte E. Hallock



A. Louise Hobbs



Goldie G. Klinepeter



Edward R. Pulsifer



Raymond F. Rundell



Anna Whorton

### TEN YEARS



A. K. Bott, Jr.



Arthur N. Crenshaw



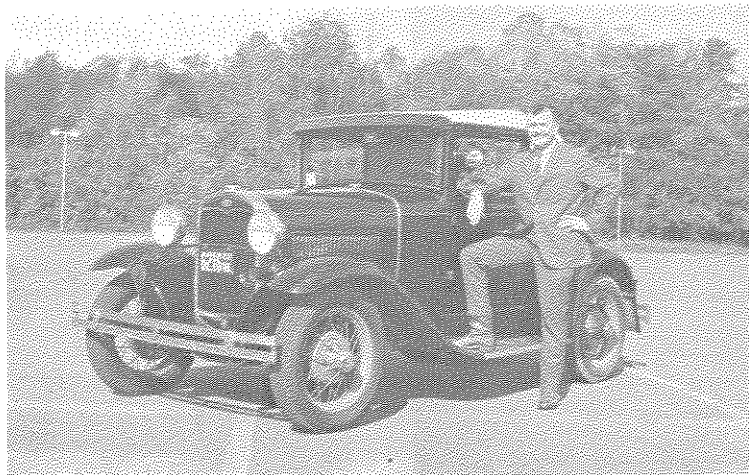
David B. Druva



John H. Kettlewell



Nora L. Kirby



**ANTIQUE CAR BUFF . . .** Senior Spares Planner Ray Hull poses proudly with his latest acquisition, a 1931 Model A. Ford sport coupe. There were only 14,000 of this particular model built and this one has less than 50,000 actual miles. It has never been restored, the previous owners of 25 years always keeping it garaged.

Ray spent a year and a half shopping for his purchase, attending antique automobile meets, auctions, traveling up to 200 mile radius to check on advertised cars. Ray would now like to locate Model A Ford parts (1928-1931).

He is a member of the Antique Automobile Club of America, Model A Restorers Club and Model A Ford Club of America.

## Family Affairs . . .

### Medi-log:

Recent hospitalizations include Ryland Wright, John Harrington, Esther Daacke, Vi Everett, Regina Webb, Ralph Fischl, Harry Vorhauer and Priscilla Goodspeed.

Virginia Mullinax and Jackie Powell escaped serious injuries in automobile accidents recently which damaged their cars.

Louise Tomkinson is sporting a cast from her knee to her toes . . . she fell Thanksgiving evening and broke a bone in her ankle.

New arrivals include baby sons for Lonnie Williams, L. Travis Farris, Earl Rhue, Tom Barclay, and Mary Walker.

## Going Up!

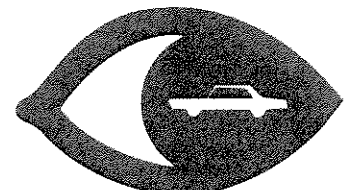
Recent promotions brought new titles to the following: **L. TRAVIS FARRIS** and **BOBBY G. STILWELL** rose to Principal Engineers, **CLIFFORD DALSEIDE** was promoted to Senior Electrical Engineer, **TOM BARCLAY** moved up to Design Engineer, and **G. E. COMPTON** was made Junior Test Engineer. Congratulations all!

## MELPAR PROPERTY CONTROL SYSTEM O.K.

A recent U.S. Government survey of Melpar's Government Property Control System has rated it satisfactory for the acquisition, use, control and disposition of Government-owned property.

This DCAS survey is conducted annually. **JOHN ADAMS**, Supervisor of Material Control, is responsible for the overall operation of this activity with **VAN NORMAN** specifically responsible for Government Property Control.

## WATCH OUT FOR THE OTHER GUY



**Drive Defensively!**